

# Change Notice

# JF Series

## Changes to LED Specifications for JF Series Spot Illuminated Tactiles

Type of Change:

- Engineering     Part Number  
 Product         Appearance



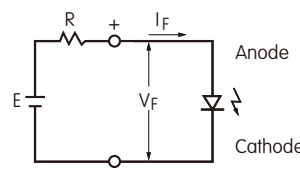
JF Series spot illuminated tactiles will have LED revisions.

1. The LED specifications for JF Series spot illuminated tactile switches will be undergoing changes. This will result in revisions to the electrical values, and will apply to red, yellow and green LEDs for standard or custom switches. Following is the comparison between the specifications before and after the changes. Effected standard part numbers are on page 2.

CHANGES TO LED SPECIFICATIONS FOR JF SERIES SPOT ILLUMINATED TACTILES							
LEDs are an integral part of the switch and are not available separately. Electrical specifications are determined at a basic temperature of 25°C.	Before Change			After Change			
	<b>C</b> Red	<b>E</b> Yellow	<b>F</b> Green	<b>C</b> Red	<b>E</b> Yellow	<b>F</b> Green	
Color							
Maximum Forward Current	$I_{FM}$	40mA	40mA	40mA	30mA	30mA	30mA
Typical Forward Current	$I_F$	30mA	30mA	30mA	20mA	20mA	20mA
Forward Voltage	$V_F$	1.7V	2.2V	2.2V	2.0V	1.9V	2.0V
		$I_F = 30mA$	$I_F = 30mA$	$I_F = 30mA$	$I_F = 20mA$	$I_F = 20mA$	$I_F = 20mA$
Maximum Reverse Voltage	$V_{RM}$	4V	4V	4V	5V	5V	5V
Current Reduction Rate Above 25°C	$\Delta I_F$	0.67mA/°C	0.67mA/°C	0.67mA/°C	0.40mA/°C	0.40mA/°C	0.40mA/°C
Ambient Temperature Range		-25°C ~ +70°C			-25°C ~ +70°C		

**Notes**

- The LED circuit is isolated and requires an external power source.
- If the source voltage is greater than the LED's rated voltage, a ballast resistor must be connected in series with the LED. The resistor value can be calculated by using the formula shown here.
- There are no changes to the switches' external dimensions.
- Contact information is below if more details are needed.



$$R = \frac{E - V_F}{I_F}$$

Where: R = Resistor Value (Ohms)  
 E = Source Voltage (V)  
 V<sub>F</sub> = Forward Voltage (V)  
 I<sub>F</sub> = Forward Current (A)

**Effective Date**

Changes to LED specifications for JF Series Spot Illuminated Tactiles will be effective April 2021.

**NKK SWITCHES CO., LTD.**

European Office:  
 Mergenthalerallee 10-12, 65760 Eschborn, Germany  
 Tel: +49 61 96 400 -189 (English, German)  
 www.nkkswitches.eu E-mail: contact@nkkswitches.eu

# Change Notice

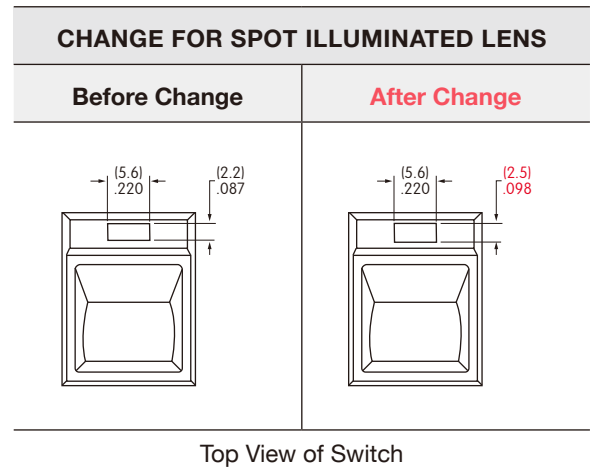
# JF Series

## Change to Dimension of JF Series Spot Illuminated Lens

Type of Change:

- Engineering     Part Number  
 Product         Appearance

2. The JF Series spot illuminated switches will be having a change to the dimension of the lens for the spot illumination. The height of the lens will be changing from 2.2mm/.087" to 2.5mm/.098". This revision applies to all actuators with spot illumination: round, square and sculptured, and for both standard or custom switches. See the table below for effected standard part numbers.



Effected Standard Part Numbers				
JF15RP1CC	JF15RP1GC	JF15RP2DC	JF15RP2HC	JF15RP3FC
JF15RP1CE	JF15RP1GE	JF15RP2DE	JF15RP2HE	JF15RP3FE
JF15RP1CF	JF15RP1GF	JF15RP2DF	JF15RP2HF	JF15RP3FF
JF15RP1DC	JF15RP1HC	JF15RP2FC	JF15RP3CC	JF15RP3GC
JF15RP1DE	JF15RP1HE	JF15RP2FE	JF15RP3CE	JF15RP3GE
JF15RP1DF	JF15RP1HF	JF15RP2FF	JF15RP3CF	JF15RP3GF
JF15RP1FC	JF15RP2CC	JF15RP2GC	JF15RP3DC	JF15RP3HC
JF15RP1FE	JF15RP2CE	JF15RP2GE	JF15RP3DE	JF15RP3HE
JF15RP1FF	JF15RP2CF	JF15RP2GF	JF15RP3DF	JF15RP3HF

### Effective Date

Change to the dimension of the JF Series spot illuminated lens will be effective April 2021.

## NKK SWITCHES CO., LTD.

European Office:

Mergenthalerallee 10-12, 65760 Eschborn, Germany

Tel: +49 61 96 400 -189 (English, German)

www.nkkswitches.eu E-mail: contact@nkkswitches.eu