

Change Notice

UB Series

Changes for UB Series with White & Blue Super Bright LEDs

Type of Change:

- Engineering Part Number
- Product Appearance



UB Series Illuminated Pushbuttons and Indicators with super bright white or blue LEDs will be undergoing a change. This will result in different electrical values from those with the previous LEDs. The revision applies to standard and custom switches and indicators. Following are comparisons between specifications, and on page 2, tables of effected standard part numbers.



UB Series with Super Bright White or Blue LEDs will Change

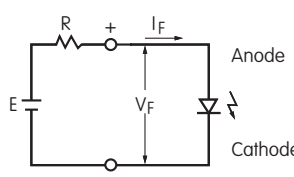
CHANGES TO SPECIFICATIONS FOR WHITE & BLUE SUPER BRIGHT LEDs

The electrical specifications shown are determined at a basic temperature of 25°C. Polarity marks are on the bottom of the switch. The LED is an integral part of switch and is not available separately.

Super Bright LEDs are Electrostatic Sensitive	 ATTENTION ELECTROSTATIC SENSITIVE DEVICES	Before Change		After Change	
		White 6B	Blue 6G	White 6B	Blue 6G
	Color	White 6B	Blue 6G	White 6B	Blue 6G
Maximum Forward Current	I_{FM}	30mA	30mA	20mA	30mA
Typical Forward Current	I_F	20mA	20mA	15mA	20mA
Forward Voltage	V_F	3.2V	3.2V	3.3V	2.9V
Maximum Reverse Voltage	V_{RM}	5V	5V	5V	5V
Current Reduction Rate Above 25°C	ΔI_F	0.40 mA/°C	0.40 mA/°C	0.25 mA/°C	0.33 mA/°C
Ambient Temperature Range		-25° ~ +50°C		-25° ~ +50°C	

Notes

- The LED circuit is isolated and requires an external power source.
- If the source voltage exceeds the rated voltage, a ballast resistor is required. The resistor value can be calculated by using the formula shown here.
- There are no changes to any other specifications or external dimensions.
- Contact the factory if further details are needed.



$$R = \frac{E - V_F}{I_F}$$

Where: R = Resistor Value (Ohms)
 E = Source Voltage (V)
 V_F = Forward Voltage (V)
 I_F = Forward Current (A)

Effective Date

Changes to super bright LEDs for UB Series Illuminated Pushbuttons and Indicators will be effective October 2018.

NKK SWITCHES CO., LTD. <https://www.nkk.com> E-mail: nkkswitches@nkkswitches.co.jp

715-1 Unane, Takatsu-ku, Kawasaki-shi, 213-8553 Japan TEL: +81 44 813 8001 FAX: +81 44 813 8031

Change Notice

UB Series

Changes for UB Series with White & Blue Super Bright LEDs

UB Switches Part Numbers			
UB15SKW036G	UB15SKG036G	UB15KKW016G	UB15KKG016G
UB16SKW036G	UB16SKG036G	UB16KKW016G	UB16KKG016G
UB25SKW036G	UB25SKG036G	UB25KKW016G	UB25KKG016G
UB26SKW036G	UB26SKG036G	UB26KKW016G	UB26KKG016G
UB15SKW036B	UB15SKG036B	UB15KKW016B	UB15KKG016B
UB16SKW036B	UB16SKG036B	UB16KKW016B	UB16KKG016B
UB25SKW036B	UB25SKG036B	UB25KKW016B	UB25KKG016B
UB26SKW036B	UB26SKG036B	UB26KKW016B	UB26KKG016B

Effected part numbers include standard part numbers combined with any cap type or color.

UB Indicators Part Numbers			
UB01KW036G	UB04KW016G	UB01KW036B	UB04KW016B

Effected part numbers include standard part numbers combined with any cap type or color.