

Toggles



A Series ..... M3  
Complement to A Switches

Rockers



G Series ..... M5  
Complement to G Switches

Pushbuttons



HB Series ..... M6  
Complement to HB Pushbuttons

Illuminated PB



JF Series ..... M8  
Complement to JF Tactiles

Programmable

Keylocks



KB Series ..... M9  
Complement to KB Pushbuttons

Rotaries



LB Series ..... M14  
Complement to LB Pushbuttons

Slides

Tactiles



PO1 for MLW Series ..... M19  
Complement to MLW Rockers

Tilt

Touch



UB Series ..... M21  
Complement to UB Pushbuttons

Indicators **M**



UB2 Series ..... M26  
Complement to UB2 Pushbuttons

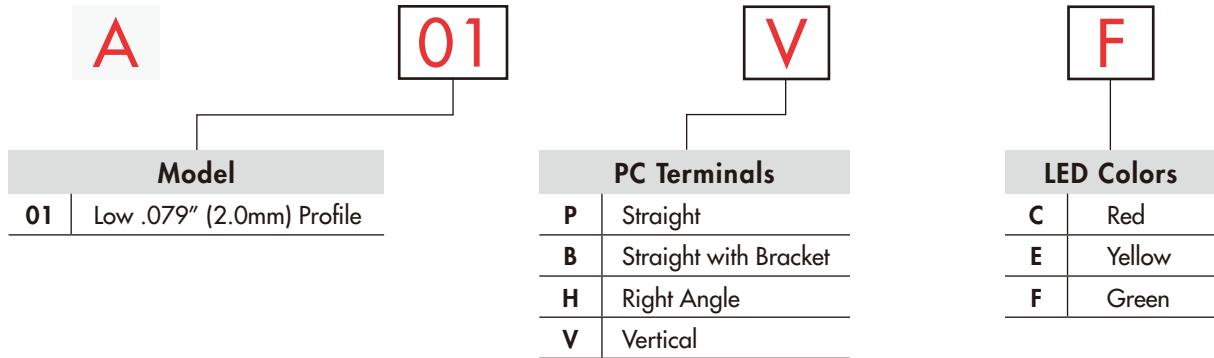
Accessories

Supplement



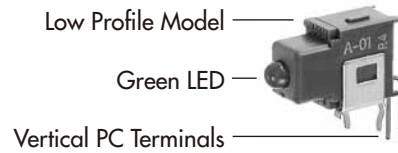
YB Series ..... M29  
Complement to YB Pushbuttons

TYPICAL INDICATOR ORDERING EXAMPLE

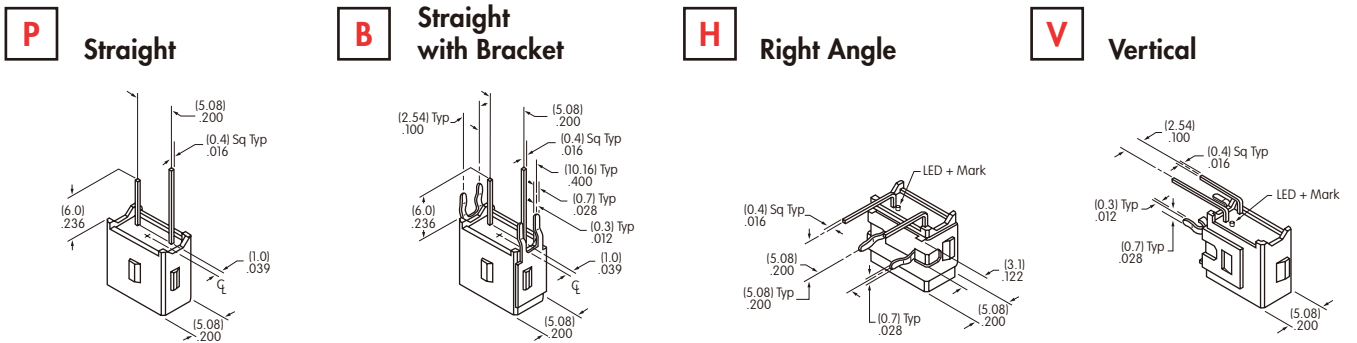


DESCRIPTION FOR TYPICAL ORDERING EXAMPLE

**A01VF**



PC TERMINALS



LED COLORS & SPECIFICATIONS

		A01 Indicator		
		C	E	F
LED is colored in OFF state	Color	Red	Yellow	Green
Maximum Forward Current	$I_{FM}$	50mA	50mA	50mA
Typical Forward Current	$I_F$	30mA	30mA	30mA
Forward Voltage	$V_F$	1.7V	2.2V	2.1V
Maximum Reverse Voltage	$V_{RM}$	4V	4V	4V
Current Reduction Rate Above 25°C	$\Delta I_F$	0.67mA/°C	0.67mA/°C	0.67mA/°C
Ambient Temperature Range		-30°C ~ +85°C		

Electrical specifications are determined at a basic temperature of 25°C.  
 If the source voltage is greater than the LED's rated voltage, a ballast resistor must be connected in series with the LED.  
 The ballast resistor value can be calculated by using the formula shown in the Supplement section.

Toggle  
 Rockers  
 Pushbuttons  
 Illuminated PB  
 Programmable  
 Keylocks  
 Rotaries  
 Slides  
 Tactiles  
 Tilt  
 Touch  
 Indicators  
 Accessories  
 Supplement

Toggles

Rockers

Pushbuttons

Illuminated PB

Programmable

Keylocks

Rotaries

Slides

Tactiles

Tilt

Touch

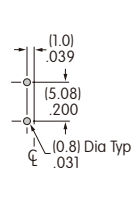
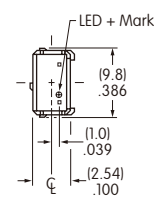
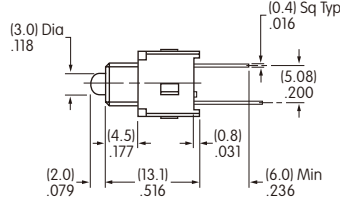
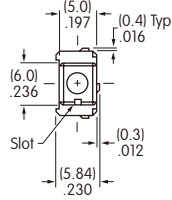
Indicators

Accessories

Supplement

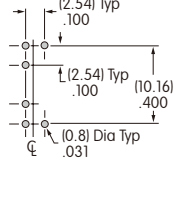
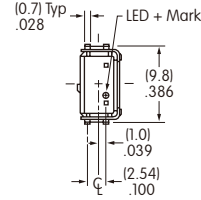
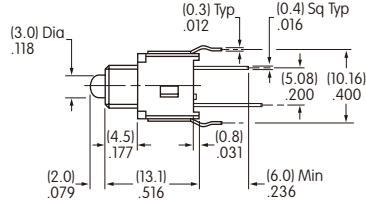
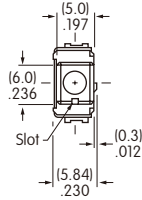
## TYPICAL INDICATOR DIMENSIONS

### Straight PC



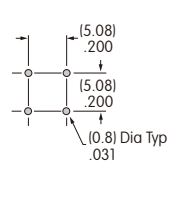
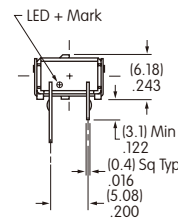
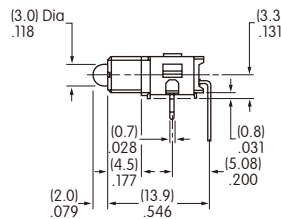
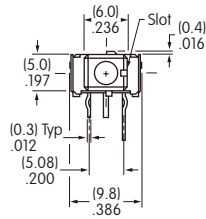
**A01PF**

### Straight PC • Bracket



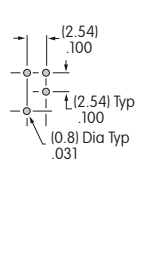
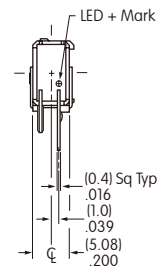
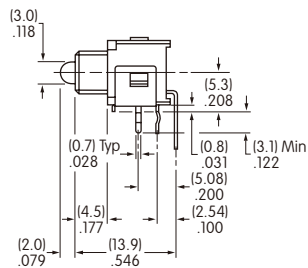
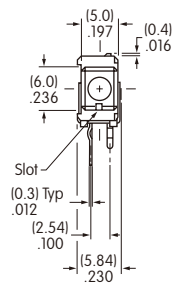
**A01BF**

### Right Angle PC



**A01HF**

### Vertical PC



**A01VF**